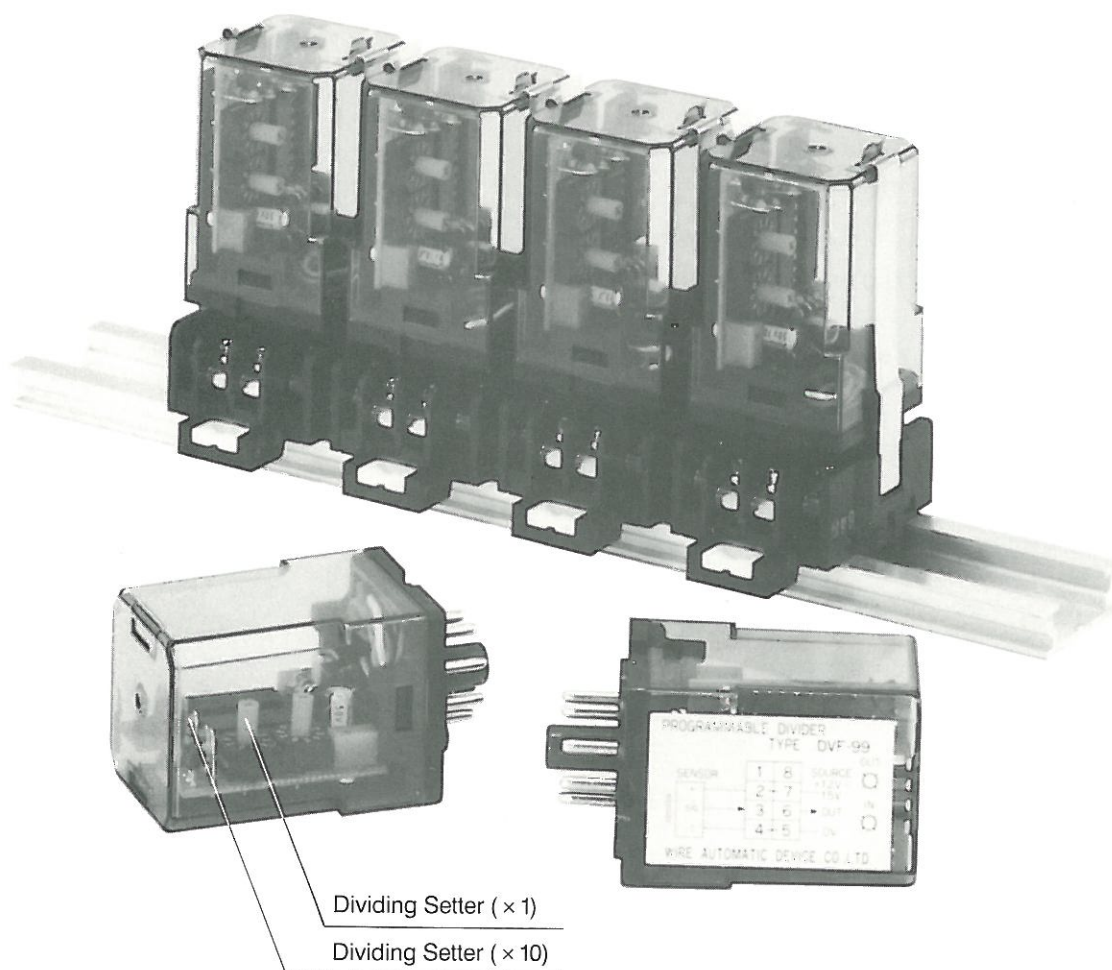


# PULSE DIVIDER

MODEL **DVF-99**

**WADECO**

This device can be used to divide the input pulse sent to an electric counter.



## Introduction

Type DVF-99 Divider receives pulses from a pulse generator then outputs pulse divided in ratios 1/1 ~ 1/99 (adjustable). You may obtain the desired ratio by comping this device's division ratio with the pulse ratio obtained from the rotation of the measuring shaft. So it may be used as a reduction gear.

## Special Features

- The presence of input or output pulses is readily seen on the indications.
- The pulse division ratio is easily adjustable.
- Compact and rail mounted type.

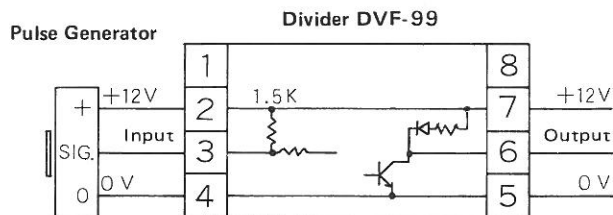


**WIRE AUTOMATIC DEVICE CO.,LTD.**

### Specifications

|                      |  |
|----------------------|--|
| Type:                | Divider DVF-99   |
| Power supply:        | Socket TP-38X  |
| Power consumption:   | DC12 ~ 15V   |
| Input:               | 12mA   |
| Output:              | Non-contact pulse input.<br>Input by means of "H" (high) and "L" (low) input signal voltages.    |
| Response frequency:  | Non-contact pulse output.<br>Output by means of "H" (high) and "L" (low) output signal voltages. |
| Dividing ratio:      | 2 KHz  |
| Ambient temperature: | 1/1 ~ 1/99(adjustable)   |
| Weight:              | -10°C ~ +50°C  |
|                      | Divider 40g  |
|                      | Socket 50g   |

### Connection



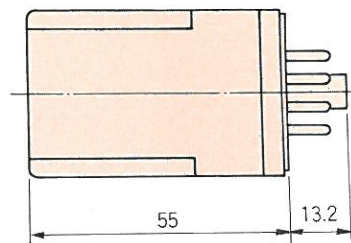
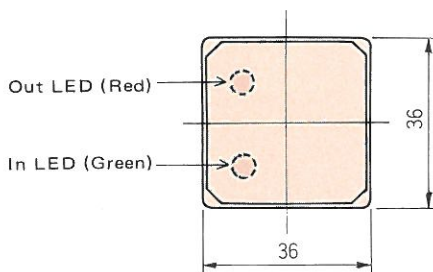
### How to set ratio of Divider

With a flat head ( - ) screwdriver, remove transparent cover and preset the dividing ratio.

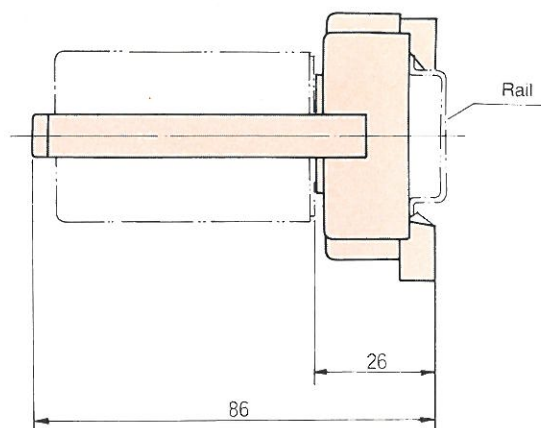
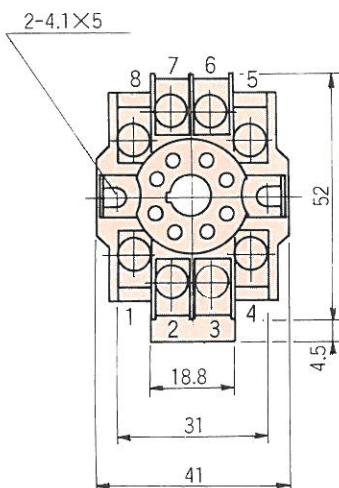
For example, when the dividing ratio of 1/12 is required, set one dividing setter ( × 10 ) at 1 and the other one ( × 1 ) at 2 respectively.

### External Dimensions

Divider  
Type DVF-99



Socket  
with metal fastening clips  
Type TP38X



*This specification may be changed without notification.*



**WIRE AUTOMATIC DEVICE CO.,LTD.**

1-9-27, Jokoji, Amagasaki-shi, Hyogo-ken 660, Japan  
TEL(06)482-3838 FAX(06)481-6321