



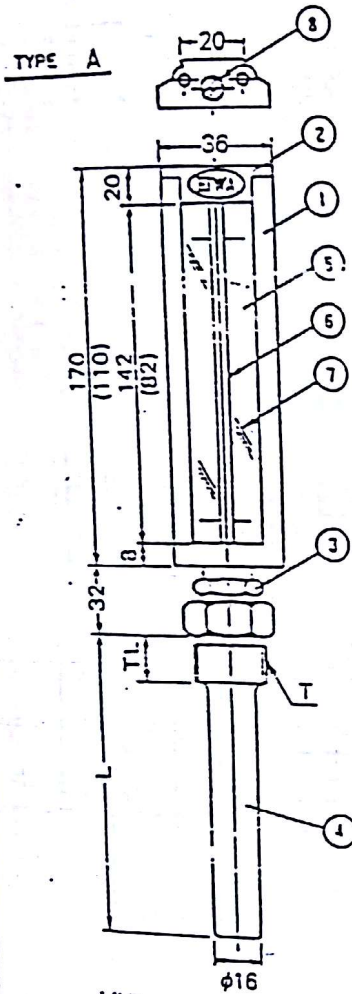
ε 114969.
255V





214909.
255V

No.	NAME (名称)	MATERIAL (材質)	REMARKS (備考)
1	PROTECTOR (保護枠)	ALUMINIUM DIE CASTING (ADC10)	BLACK (黒色塗装)
2	CAP (蓋)	ALUMINIUM DIE CASTING (ADC10)	BLACK (黒色塗装)
3	NUT (ワナット)	BRASS (C3604B) (BsBM)	BLACK (黒色塗装)
4	THERMOWELL (感熱外筒)		Cr GILT (Crメッキ)
5	SCALE PLATE (目盛板)	ALUMINIUM PLATE (A1100P) (A1P)	
6	THERMOMETER (温度計)		
7	FRONT GLASS (前面ガラス)	GLASS (板ガラス)	
8	SCREW (ボネジ)	BRASS (C3604B) (BsBM)	Ni WHITE FINISH (Niエアケ)



JIS		DIN		ASTM	
NO.	SYMBOL	NO.	TYPE	NO.	TYPE
H5302	ADC10	1725/2	GD-4LS18 CU3	B84	SC34A
H3250	C3604B	17660	CUZM39PB 3	B16	C36000
G4304	SUS304	17440	XSCRM 180	A167	TYPE 304
H4000	A1100P	—	—	B209	1100
	GLASS				

JF-1A	-20~100°C	AL	50	60					
	0~600°C	Hg							
	0~500°C	Hg							
	0~200°C	Al Hg							
	0~150°C	Al							
	0~100°C	Al							
	0~50°C	Al							

SCALE RANGE 目盛範囲	LIQUID 感温液	L L長	OUT. 短数	REMARKS 備考	MATERIAL THERMOWELL 感熱外筒	T	TL (mm)
---------------------	---------------	---------	------------	---------------	-----------------------------	---	---------

CUSTOMER	NAME	DRAW	DRAWING NO.
	JF- THERMO METER 保護枠付温度計		TA92-F10242-1

EIWA SEIKO CO., LTD.

NISCO

MOBARAKEH STEEL COMPLEX
DIRECT REDUCTION PLANT

IRITEC

ایریتک

تولید کننده مستقیم

SPECIFICATION AND DATA SHEET

NO. 62/16

Page 1328 of 1700

Date- 13 FEB. 1984

Revision Δ AUG. 13, 87

Δ NEW PAGE OCT. 14, 1986

INDUSTRIAL BIMETAL AND GLASS THERMOMETERS

SHEET _____ OF _____

SPEC. NO. _____ REV. _____

NO BY DATE REVISION

CONTRACT _____ DATE _____

REQ. - P.O. _____

BY _____ CHK'D _____ APPR. _____

THERMOMETER

1. Stem: Threaded ☐ Plain ☐ Union ☐
Material: Brass
2. Stem or Union Thread: $\frac{1}{8}$ in. ☐ $\frac{1}{4}$ in. ☒
Stem Diameter: STD ☐ .250 in. ☐ .375 in. ☐
Case Material: STD ☐ Other ☐ Aluminium
3. Dial Size _____ Color Black
4. Scale length 170 mm Adjustable ☐
5. Form: Fig. No. 3 Herm Sealed Case ☒
6. External Calibrator ☐
7. MFR. & Model No. EIWA SEIKO, JF-1A

WELL

10. None ☐ Included ☒ By Others ☐

11. Material: 304SS ☒ 316SS ☐

Other: _____

12. Construction: Drilled ☐ Built-Up ☒

Other: _____

Well Length Must Suit Stem Length.



FIG. 1
BOTTOM
FORM
(STRAIGHT)

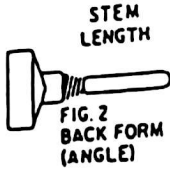


FIG. 2
BACK FORM
(ANGLE)

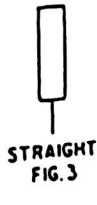


FIG. 3
STRAIGHT

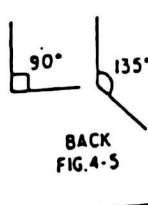


FIG. 4-5
BACK

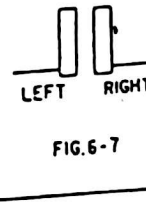


FIG. 6-7
LEFT RIGHT

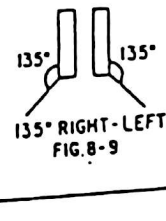


FIG. 8-9
135° RIGHT-LEFT

Rev.	Tag No.	Range	Operating Temp	Stem Length	Well Conn.	Lag Ext.	Service
	TI-XT18A	-20°C ~ 100°C	10°C ~ 75°C	50 mm	NPT 3/4		Lube Oil Temp. Before Cooler-PG Comp. 1st Stage
	TI-XT18B						- do -
	TI-XT33A						Lube Oil Temp. Before Cooler-PG Comp. 2nd Stage
	TI-XT33B						- do -
	TI-XT48A						Lube Oil Temp. Before Cooler-CG Comp.
	TI-XT48B						- do -
	TI-XT19A	-20°C ~ 100°C	10°C ~ 60°C	50 mm	NPT 3/4		Lube Oil Temp. After Cooler-PG Comp. 1st Stage
	TI-XT19B						- do -
	TI-XT34A						Lube Oil Temp. After Cooler-PG Comp. 2nd Stage
	TI-XT34B						- do -
	TI-XT49A						Lube Oil Temp. After Cooler-CG Comp.
	TI-XT49B						- do -

Notes:

Supplied