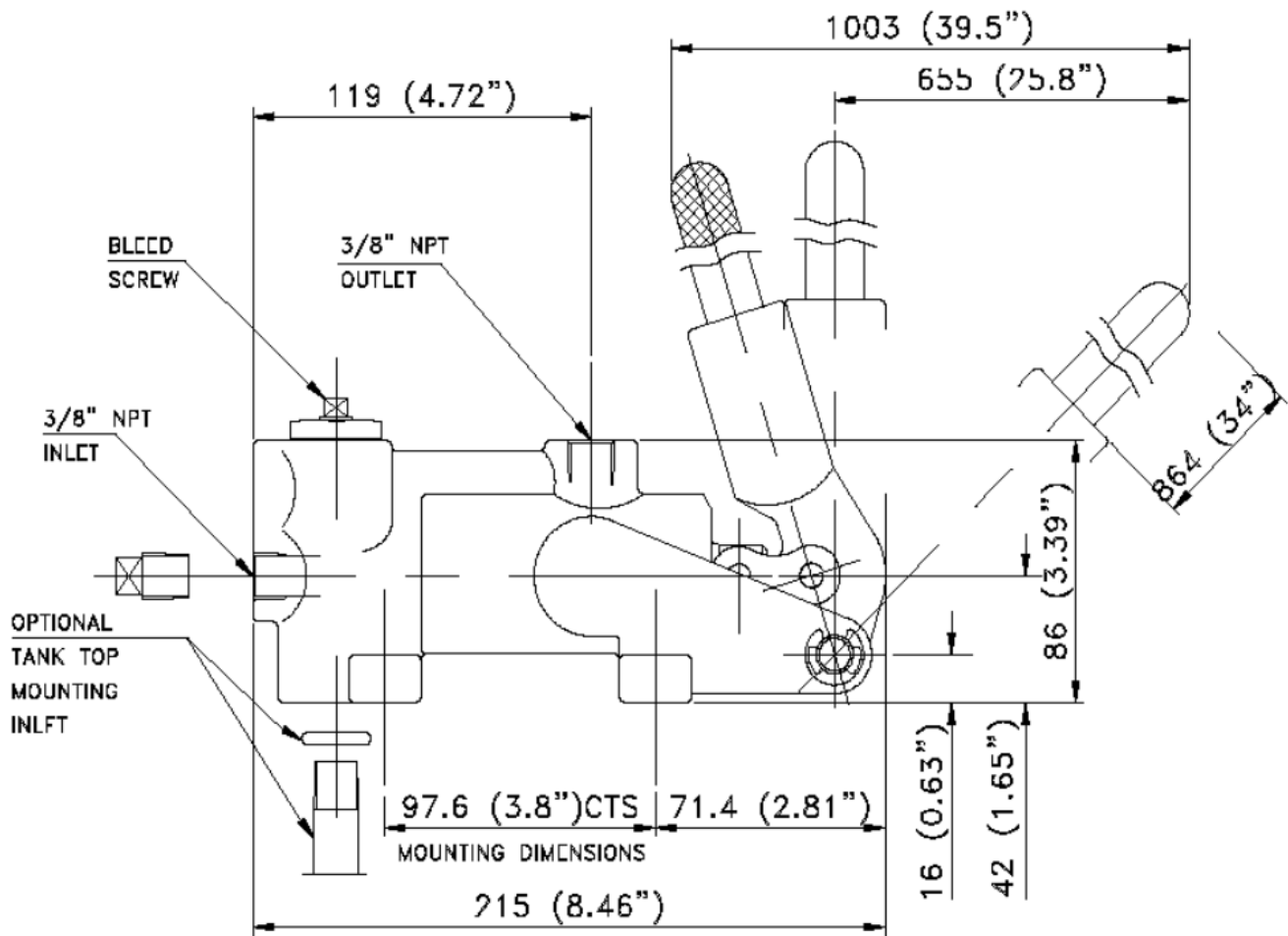


H-PH20 - Hand Pump

Features

- Bleed screw is tamper resistant
- Bronze piston bush
- Pivot pin hardened and ground
- Piston rod is made from heat treated stainless steel
- Bottom inlet for tank top mounting



Disclaimer

The information, specifications and technical data contained in this data sheet is subject to change without notice. The user should verify all technical data and specifications prior to use. IPU does not warrant that the material and information contained herein is current or correct and assumes no responsibility for the use or misuse of any such material and information by the user.

Engine Starting • Engine Control • Engine Heating • Engine Silencing • Fuel Conditioning • Oil Conditioning • Single Sourcing • Groundcare

Industrial Power Units Ltd. Churchbridge, Oldbury B69 2AS

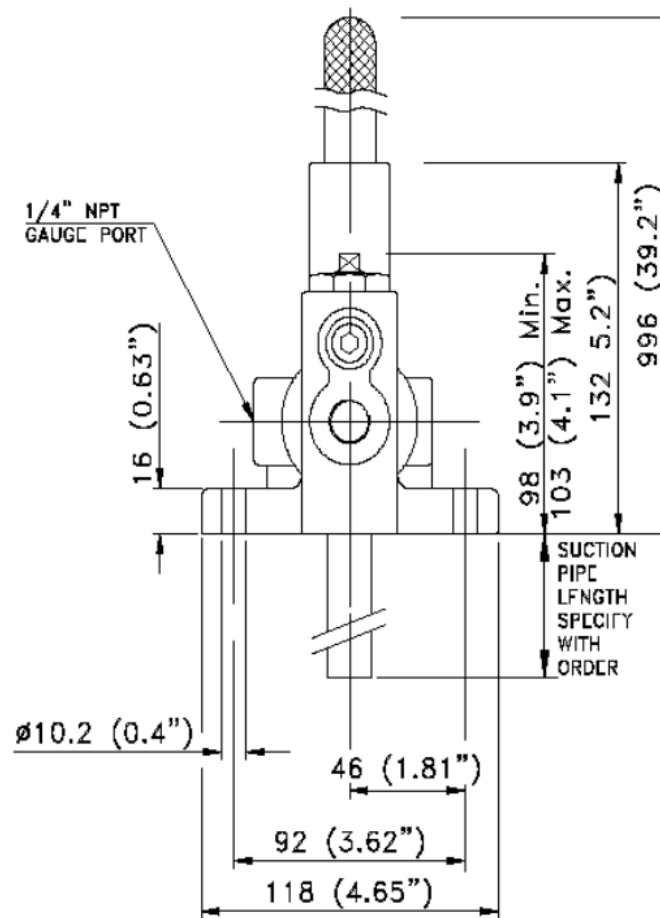
T: +44 (0) 121 511 0400 F: +44 (0) 121 511 0401

E: ipu@ipu.co.uk W: www.ipu.co.uk

Registered in England No.641876. Registered office: as above



2003/372



Specifications

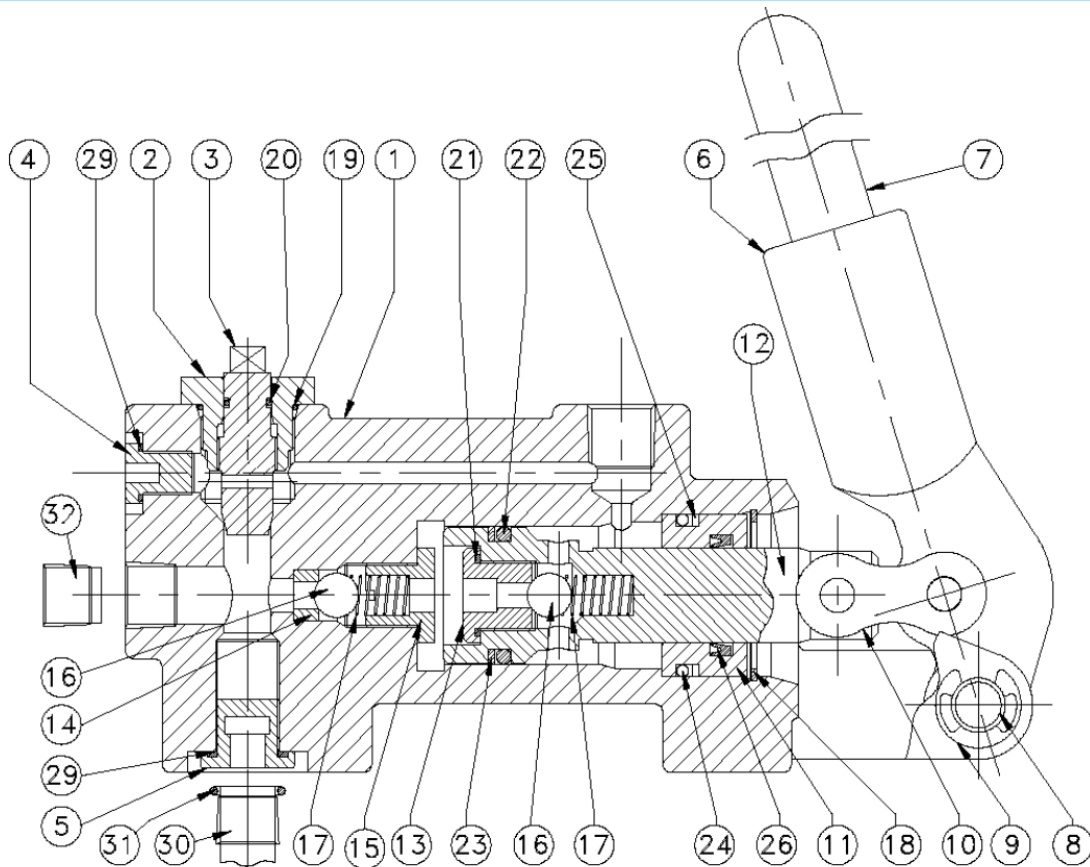
Weight without handle	4.5 kg (9.9 lb)
Weight including handle	6.7 kg (14.75 lb)
Construction	Cast iron (ductile iron)
Maximum working pressure	21 MPa (3000 psi)
Suction Pressure	75 kPa (12 psi) absolute*
Fluid media	Mineral oil
Viscosity range	ISO 32 to 46 (SUS 140-230)
Temperature range	-30°C to +100°C (-22°F to +212°F)
Displacement	20 cc/ cycle (1.22 cu.in)
Force on handle	210N (48lb.) at 21 MPa (3000 psi)
Bypass	Manual

* This equates to the pump operating (priming) 3m (9.8 ft) above oil level at sea level altitude.

Disclaimer

The information, specifications and technical data contained in this data sheet is subject to change without notice. The user should verify all technical data and specifications prior to use. IPU does not warrant that the material and information contained herein is current or correct and assumes no responsibility for the use or misuse of any such material and information by the user.

Hand Pump Parts List



Item	Description	Qty	Part no.
1	Pump body	1	PH20-01
2	Guide bush	1	PH20-02
3	Bleed screw	1	PH20-03
4	Bleed plug	1	PH20-04
5	Tank top plug	1	PH20-05
6	Pivot level	1	PH20-06
7	Handle	1	PH20-07
8	Pivot pin	1	PH20-08
9	Circlip	2	PH20-09
10	Connecting link	1	PH20-10
11	Piston bush	1	PH20-11
12	Piston	1	PH20-12
13	Outlet valve seat	1	PH20-13
14	Inlet valve seat	1	PH20-14
15	Inlet spring retainer	1	PH20-15

Item	Description	Qty	Part no.
16	Valve ball	2	PH20-16
17	Valve spring	2	PH20-17
18	Circlip (piston bush)	1	PH20-18
19	O-ring (guide bush)	1	PH20-19
20	O-ring (bleed screw)	1	PH20-20
21	Seal (outlet valve seat)	2	PH20-21
22	O-ring (piston)	1	PH20-22
23	Backup ring (piston)	1	PH20-23
24	O-ring (bush)	1	PH20-24
25	Backup ring (bush)	1	PH20-25
26	U-seal	1	PH20-26
29	Seal ring	1	PH20-29
30	Standpipe (optional)	1	PH20-30
31	O-ring (standpipe)	1	PH20-31
32	Plug	1	PH20-32

Items 16 to 29 included in repair kit PH20-RK

Disclaimer

The information, specifications and technical data contained in this data sheet is subject to change without notice. The user should verify all technical data and specifications prior to use. IPU does not warrant that the material and information contained herein is current or correct and assumes no responsibility for the use or misuse of any such material and information by the user.