



**POWERFEED
SYSTEMS**

GENERAL INFORMATION BROCHURE



GALAXY® HEAVY DUTY SPRING OPERATED CABLE REELING DRUMS



Metreel

Cossall Industrial Estate, Coronation Road, Ilkeston, Derbyshire DE7 5UA



+44 (0)115 932 7010



+44 (0)115 930 6263



sales@metreel.co.uk



www.metreel.co.uk

INTRODUCTION...

Designed for simplified maintenance and long service, the **Galaxy™** Reel is another in a long line of innovative cable/hose handling products from Metreel.

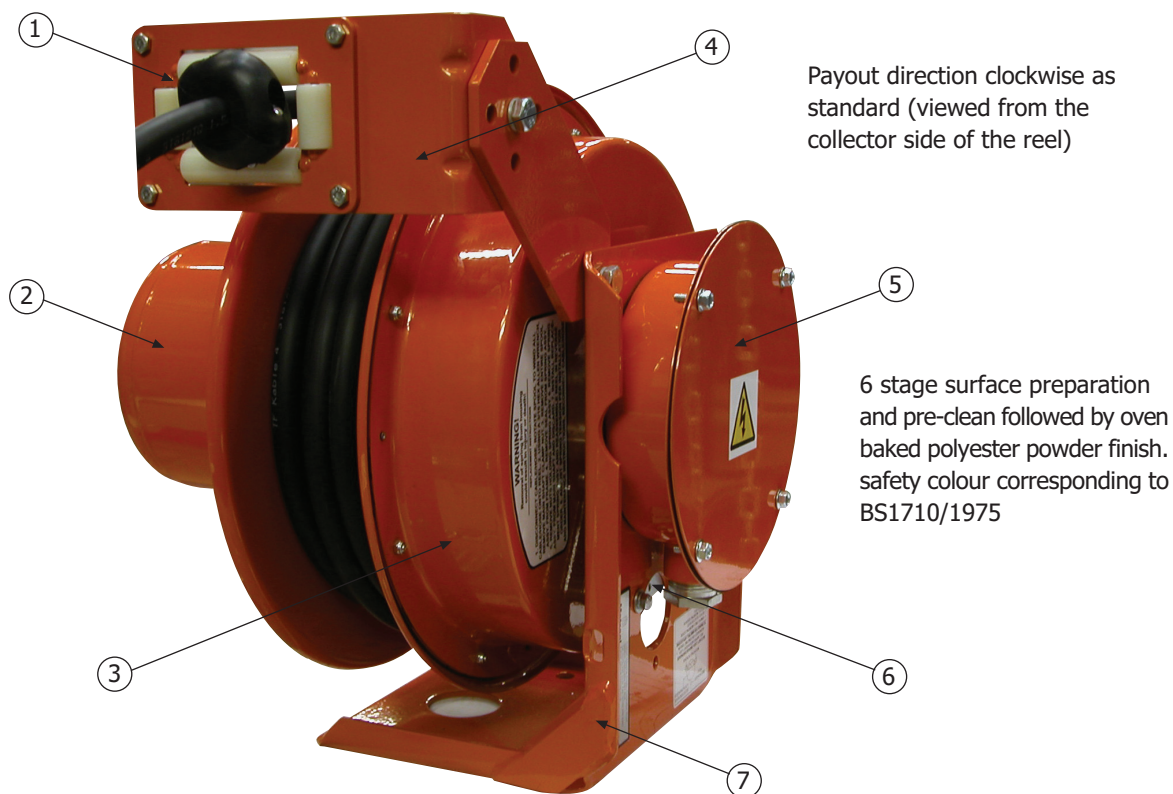
Galaxy™ Reels are conveniently adapted to the requirements of your application. Multi-position roller guides and terminal boxes accommodate a variety of reel mounting configurations. Hardened steel stop catch mechanism with ball bearing cam follower allows quick and easy changeover from window-blind type action to continuous tension. An optional swivel base makes the **Galaxy™** Reel suitable for the most dynamic of cable reeling applications.

Welded heavy gauge steel construction ensures that the **Galaxy™** Reel will last for years to come. Oversized bearings and a heavy duty one piece mainshaft provide sustainability greater mechanical strength than comparable reels. Modular construction of **Galaxy™** Reels sub-assemblies provide quick and easy servicing of all components. Spring replacement, collector servicing and cable installation are readily performed without removing the **Galaxy™** Reel from it's mounting location.

Exclusive to the **Galaxy™** Reel is the new unitised flat disc collector assembly. Smaller in size with great dissipational characteristics, the flat disc collector operates at an unparalleled level of efficiency. Flat disc copper graphite brushes and beryllium copper contactor springs reduce maintenance and alignment problems associated with conventional slip ring assemblies. If service to the flat disc collector is ever required, removal of the modular assembly is quickly performed by loosening 2 screws on the reel mainshaft.

Other safety and convenience features include a generously sized terminal box to facilitate easy cable connection, free wheeling spring hub and a unique, self-contained **Safetychange®** spring motor.

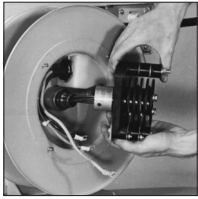
PRODUCT BREAKDOWN...



1	Optional Cable Stop
2	Weather and dust proof housing - protects collector assembly
3	Safetychange® spring motor for safe and easy replacement
4	Multi-position Roller Guide
5	Generously sized terminal box
6	Stop catch mechanism for locking and unlocking the cable retrieve function
7	Welded, all-steel mounting bracket for dependable long life

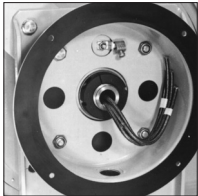


DESIGN FEATURES...



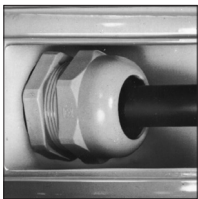
Modular Collector Assembly:

Permits replacement of entire collector assembly as a unit. Brushes are an integral part of the collector assembly. Maintenance can be performed with reel in place. Simply disconnect wiring and remove 2 set screws to release assembly.



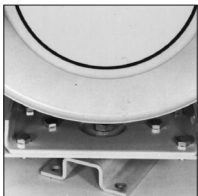
Generously Sized Terminal Box:

Facilitates easy cable connection by providing additional space with larger internal area. Pivoting action of terminal box about central reel axis permits convenient positioning of entry gland to suit mainly supply.



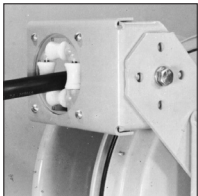
Weatherproof Cable Entry:

Provided at the shaft for secure watertight connection. Cable feeds easily through hollow shaft for termination within the collector enclosure. Connections required at one point only.



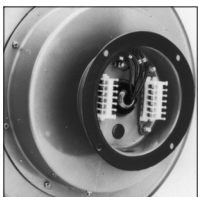
Heavy Duty Swivel Base:

Optional swivel base allows 330° rotation of reel assembly. Required for 2-way payout and other applications demanding that the self aligning to the direction of cable run. 360° continuous swivel bases are available on request.



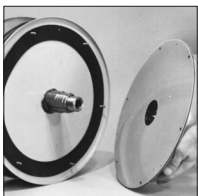
Multi-Position Roller Guide:

Adjustable roller guide and guide arm allows easy adaptation of **Galaxy™** Reel to the positioning requirements of your application.



Flange Mounting Bracket:

Optional mounting bracket for appropriate applications e.g. Face mounting. Unique design incorporates standard terminal box and alternative cable and entry positions.



Replaceable Spring Motor:

Designed with your safety in mind. **Safetychange®** spring motors are quickly serviced. Sealed in a throw-away disposable housing, the spring motor is replaced as a unit. No need to handle loose springs or remove reel from its mounting location.



PART NUMBER EXPLANATION...

Direct Drive:

G 142 - 63 - P3 - SC2

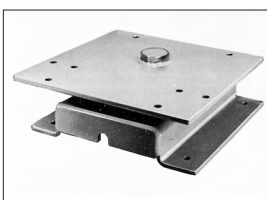
G	14	2	6	3	P3	S	C2
Reel Series	Frame Size	Spring Model	No. of Collector Poles	Collector Capacity	Pretension Turns	Swivel Base (optional)	Cable Stop (optional)

Applications:

- High Duty Cycle
- Hazardous locations
- Corrosive Environments
- Extreme Temperatures

Collector Capacity	
Code	Amps
3	30
5	55

ACCESSORIES...



Swivel Base:

Heavy duty swivel base provides 340 degree rotation for applications where such rotation is needed to accommodate machine travel in anything other than a straight line. To specify a swivel base for your **Galaxy™** Reel append the suffix "S" to the end of your reel type number.

For example:

A G124-63-P3 reel ordered with an optional swivel base would be specified as follows: G142-63-P3-S.

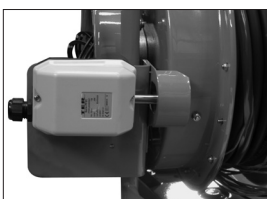


Cable Stop:

Maintains pre-tension turns on reels utilised in hand operated applications. Ensures end of cable is always within easy reach. Durable Neoprene rubber. To specify a cable stop, append the number of chosen **Galaxy™** Reel with the catalogue suffix of the desired cable stop.

A G142-63-P3 ordered with swivel base, and cable stop would be specified as follows: G142-63-P3-SC2

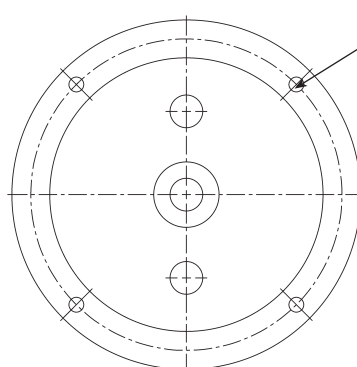
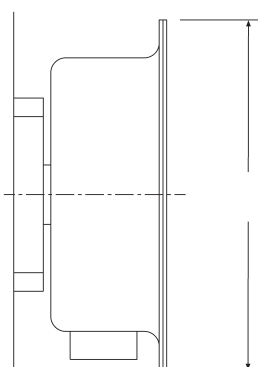
Cat. Suffix	Cable Range
C1	10-13 dia.
C2	13-19 dia
C3	19-25 dia



Rotary Limit:

Reels can be furnished with a 2 position rotary limit switch upon request. (For use as raise/lower limits etc) please contact our sales office for details.

ALTERNATIVE FLANGE MOUNTING BRACKET...



4 off equally spaced 10 Dia mounting holes for M8 screws on a 209.5 P.C.D



+44 (0)115 932 7010



+44 (0)115 930 6263

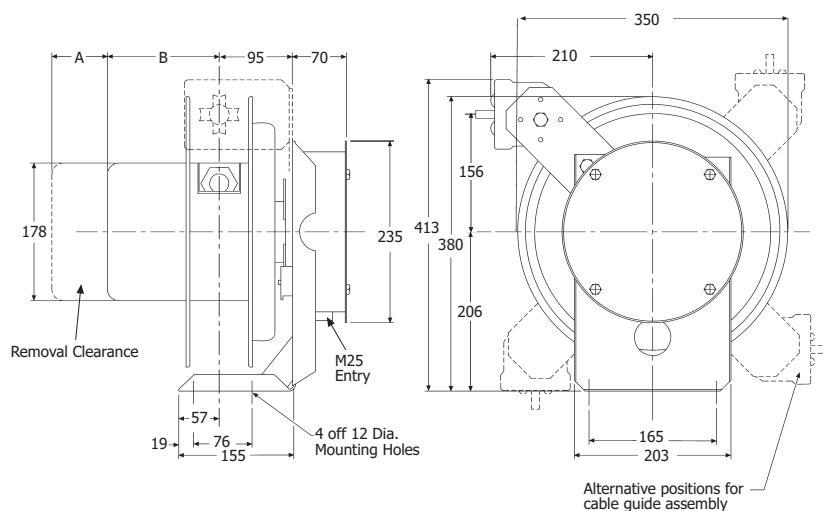


sales@metreel.co.uk

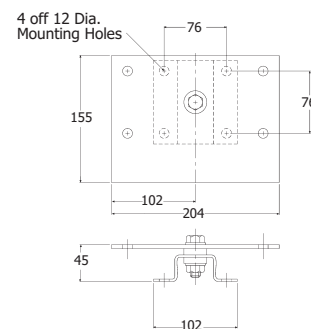


www.metreel.co.uk

GI4 DIMENSIONAL DATA...



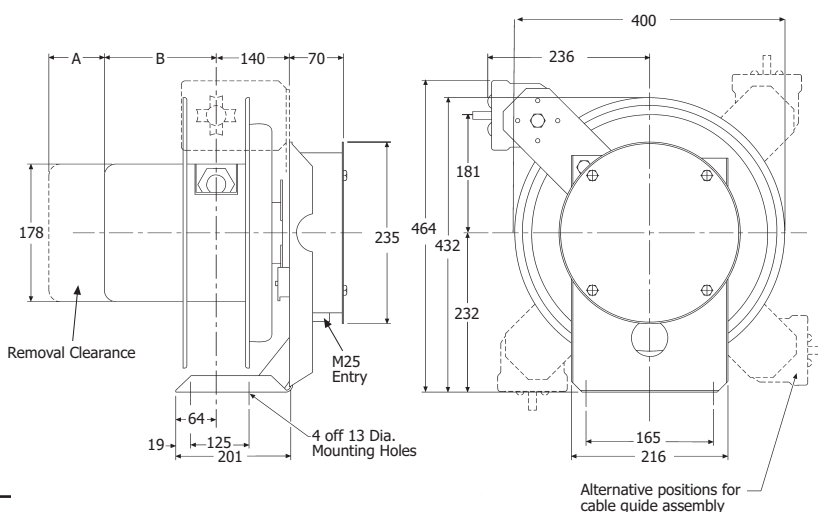
Swivel Base Detail:



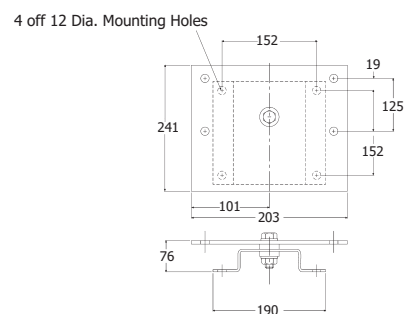
Collector Housing Dimensions:

Poles/Amps	A	B
1-4/30	115	145
5-8/30	153	183
9-12/30	190	221
1-4/55	153	183

GI6 DIMENSIONAL DATA...



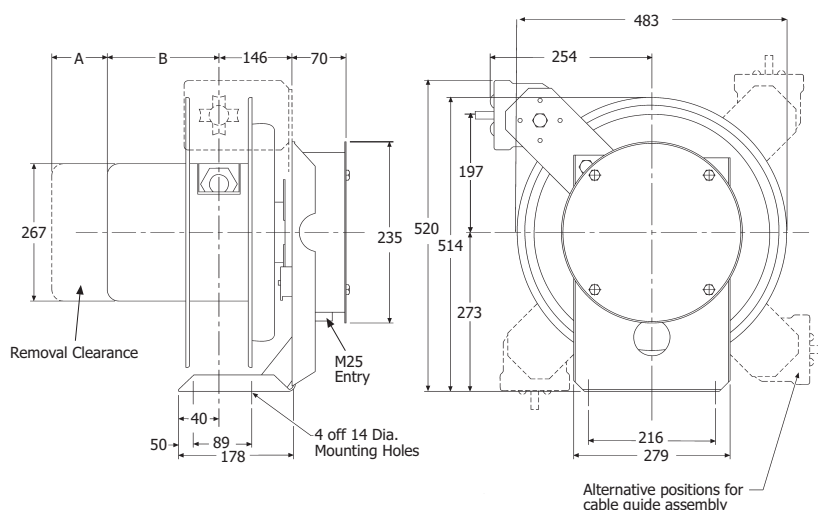
Swivel Base Detail:



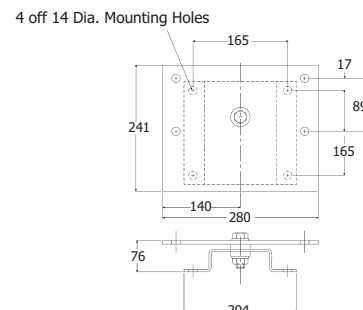
Collector Housing Dimensions:

Poles/Amps	A	B
1-4/30	115	151
5-8/30	153	189
9-12/30	190	227
1-4/55	153	189

GI9 DIMENSIONAL DATA...



Swivel Base Detail:



Collector Housing Dimensions:

Poles/Amps	A	B
1-4/30	83	138
5-8/30	115	170
9-12/30	153	208
1-4/55	115	170



POWERFEED SYSTEMS

- Festoon Systems
- Standard & Custom Reeling Drums
- Cable & Hose Drag Chains
- Conductor Systems
- Collector Columns
- Flexible Cables
- Plug & Sockets
- Pendant Control Stations
- Radio Remote Pendants
- Worm Gear Limit Switches
- Foot Switches

SAFETY SYSTEMS

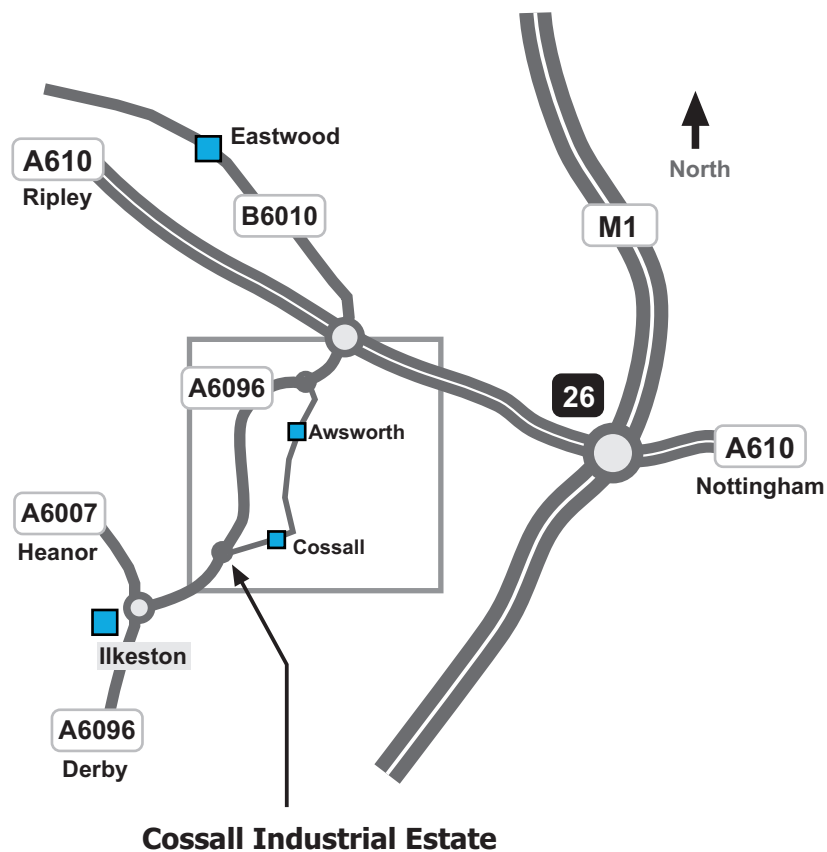
- Vertical Fall Arrest Ladder Systems
- Safetrack Horizontal Track Systems
- Horizontal Wire Systems

MECHANICAL HANDLING

- **MET-TRACK®** Light Cranes
- **MET-TRACK®** Monorails & Conveyors
- **MET-TRACK®** Sliding Door Gear
- **MET-TRACK®** Custom Track Systems
- **Alu-Lift®** Portable Aluminium Gantry
- Tool Balancers

OFFSHORE DIVISION

- Cable & Hose Drag Chains
- Cable & Hose Festoon Systems
- Cable & Hose Booms
- Cable & Hose Reeling Drums



P004-0813

Cossall Industrial Estate, Coronation Road, Ilkeston, Derbyshire DE7 5UA



+44 (0)115 932 7010



+44 (0)115 930 6263



sales@metreel.co.uk



www.metreel.co.uk